

# HARPENDEN *for intermediaries*

If it's complex, we might find a way...

## RESIDENTIAL & LARGE LOAN RESIDENTIAL

### RESIDENTIAL:



Up to four  
borrowers  
per application

Max  
**75%**  
LTV IO



Properties with an  
annexe intended for  
Let or use by friends or  
family are accepted

### RESIDENTIAL LARGE LOAN:



Up to four  
borrowers  
per application



Can accept income  
from all four borrowers

Borrowing of

**£2.5M**

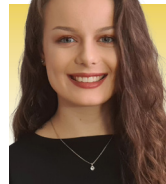
available up  
to 65%

### OUR TEAM

**Jean Errington**  
TELEPHONE BUSINESS  
DEVELOPMENT MANAGER

**Chelsea Pordage**  
TELEPHONE BUSINESS  
DEVELOPMENT MANAGER

**Vanessa Hunt**  
KEY ACCOUNT MANAGER



Contact our team via email:  
[brokerteam@harpendenbs.co.uk](mailto:brokerteam@harpendenbs.co.uk)  
or via Telephone: 01582 463133 - Option 1

[harpendenbs.co.uk/intermediaries](https://harpendenbs.co.uk/intermediaries)

This content is intended for Intermediary purposes only.  
**YOUR MORTGAGE WILL BE SECURED ON YOUR PROPERTY AND YOUR HOME MAY BE REPOSSESSED IF YOU DO NOT KEEP UP REPAYMENTS ON YOUR MORTGAGE.** Authorised by the Prudential Regulation Authority and regulated by the Financial Conduct Authority and Prudential Regulation Authority. Firm reference number: 157260.



Scan to view our  
Intermediaries Hub